

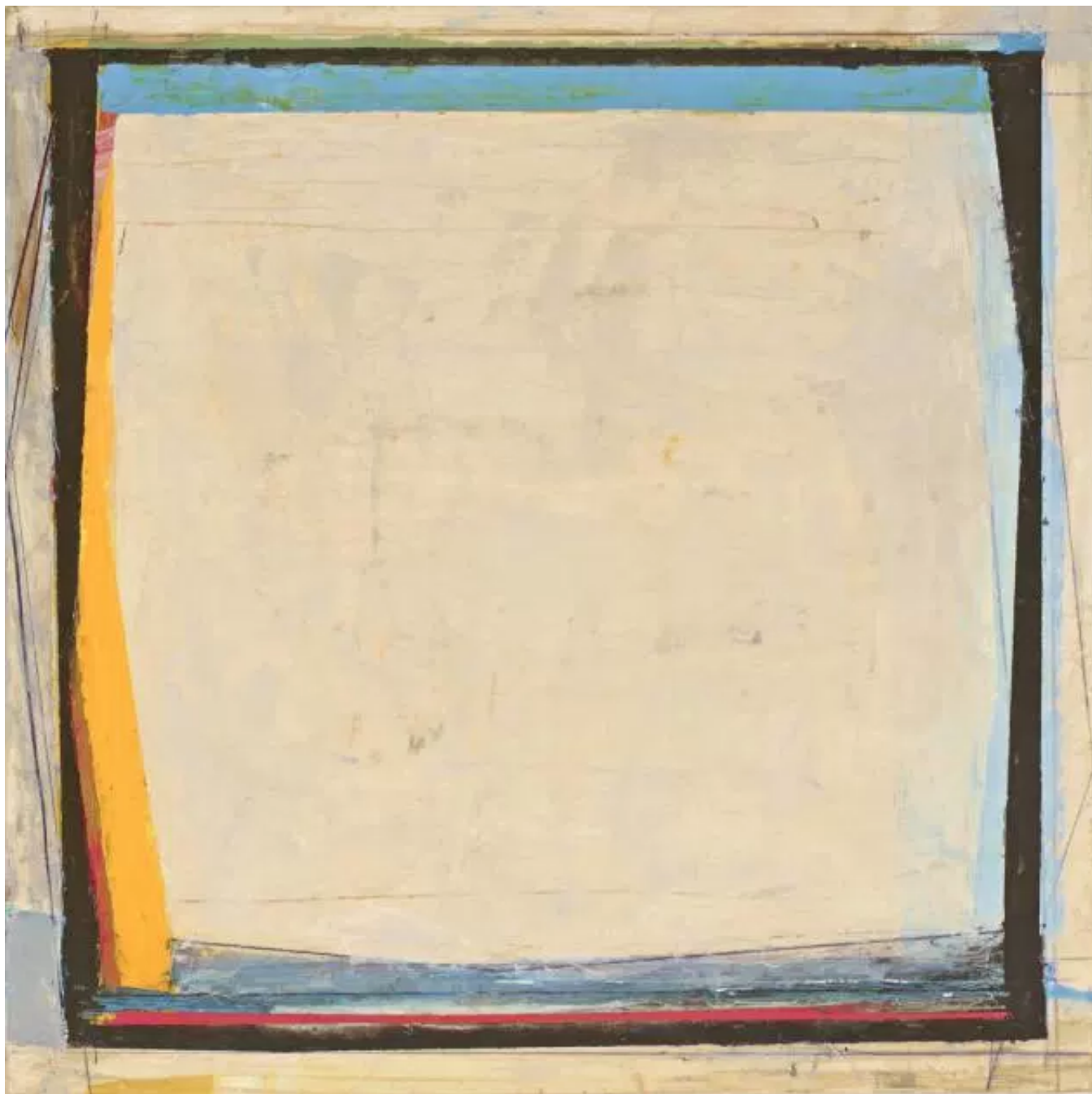
Painter's Progress

Works in progress by Stephen B. MacInnis

Have you met...Elizabeth Gourlay?

Posted on November 18, 2013 by sbsmacinnis

i
8 Votes



https://sbmacinnis.files.wordpress.com/2013/11/phpthumb_generated_thumbnailjpg1.jpg

kithara 20 , 2013

12" x 12" Pencil And Oil On Panel

An introduction can be a wonderful thing. You can meet interesting people, and make new friends. You can be introduced to your new favorite foods, books, music, or artist.

I'd like to introduce you to some of my favorite artists. Some of whom I've been familiar with for years, and others I've only recently been introduced to.

The person I'd like to introduce is the artist Elizabeth Gourlay
(<http://www.elizabethgourlay.com/>).



<https://sbmacinnis.files.wordpress.com/2013/11/zeri-9-2013.jpg>

zeri 9 2013

EDUCATION

MFA in Painting, Yale University School of Art, New Haven, Connecticut, 1985

BA (First Class Honors), Edinburgh College of Art, Edinburgh, Scotland, 1983

Fellowship at Yale/Norfolk Summer School of Music & Art, Norfolk, Connecticut, 1982

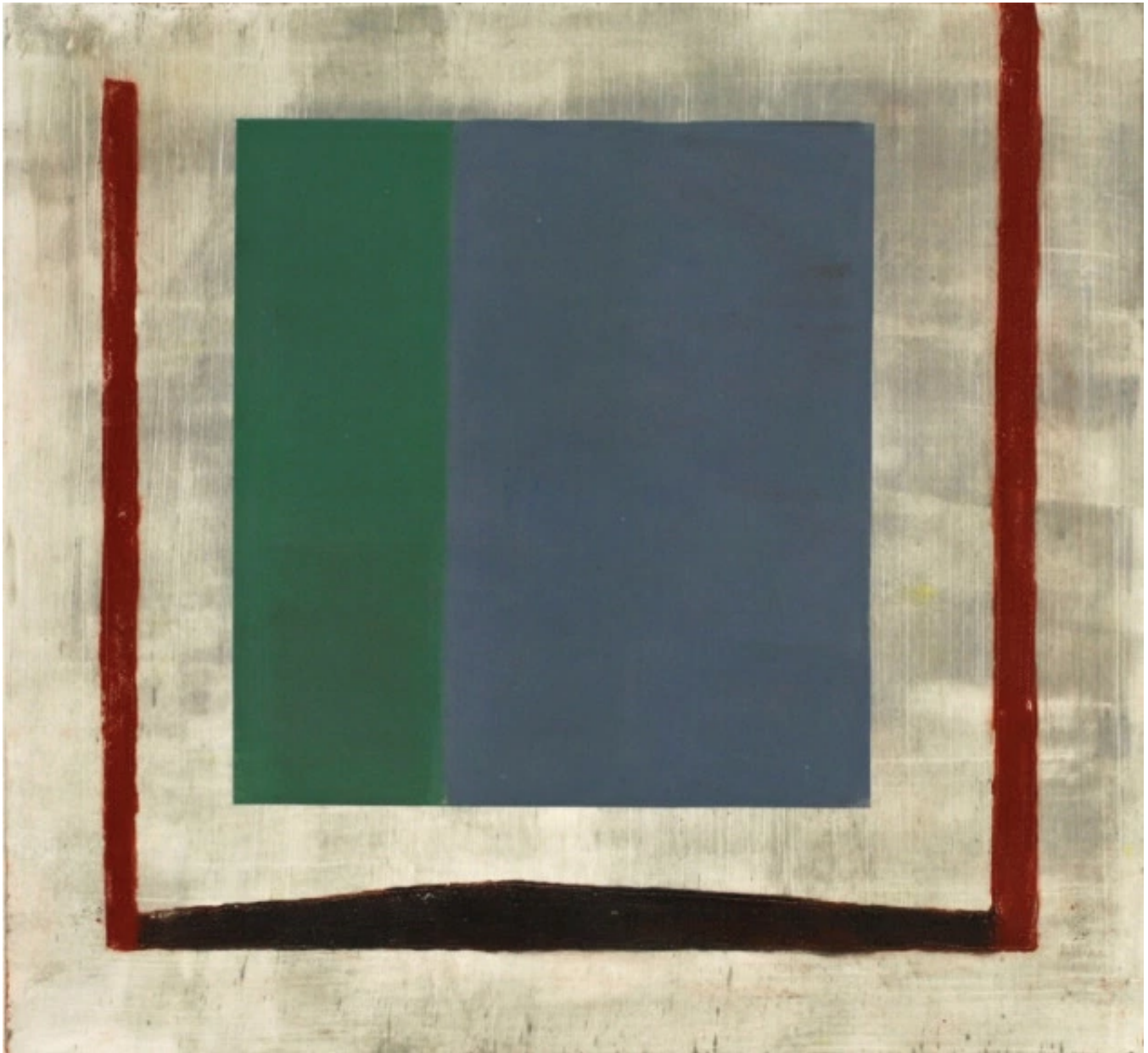


<https://sbmacinnis.files.wordpress.com/2013/11/cortile-1-2013.jpg>
cortile 1 2013

“For over 20 years, Elizabeth Gourlay has developed a practice that, at its heart, is concerned with exploring and developing the possibilities of color and form. Employing a wide range of color palettes from nearly monochromatic to highly polychromatic, her work consistently and rigorously examines ways to broaden the scale of color interaction and expression. Using pure abstraction to articulate her vision, Gourlay’s art is a process of progressively and meditatively layering elements of line and form according to the natural unfolding of an inner vision (dreaming).

Elizabeth Gourlay’s visual language is one that demonstrates mastery of the simplest forms of mark making. Employing characteristic grids, lines and geometric shapes, Gourlay’s work is frequently noted for its musicality and architectonic undertones. Repetitions of shape, color and

line create harmonies and dissonances that energize surfaces and carry the eye with their rhythms. At times spirited and snappy, and other times quiet and contemplative, Gourlay's work consistently invites elevated sensitivities to the visual world." Katie Litke



<https://sbmacinnis.files.wordpress.com/2013/11/sea-green-slate-blue-2013.jpg>
sea green slate blue 2013

Other material relating to Elizabeth Gourlay.

Artist website: [elizabethgourlay.com](http://www.elizabethgourlay.com/) (<http://www.elizabethgourlay.com/>)

Artsy: [Elizabeth Gourlay](http://artsy.net/artist/elizabeth-gourlay) (<http://artsy.net/artist/elizabeth-gourlay>)

Giampietro Gallery: [Elizabeth Gourlay](http://giampietrogallery.com/title.php?artistname=ELIZABETH%20GOURLAY&artistId=74125) (<http://giampietrogallery.com/title.php?artistname=ELIZABETH%20GOURLAY&artistId=74125>)