

(<http://www.designsponge.com>)

[INTERIORS \(http://www.designsponge.com/category/interiors\)](http://www.designsponge.com/category/interiors)

[DIY \(http://www.designsponge.com/category/div\)](http://www.designsponge.com/category/div)

[FOOD & DRINK \(http://www.designsponge.com/category/food-drink\)](http://www.designsponge.com/category/food-drink)

[TRAVEL \(http://www.designsponge.com/category/travel\)](http://www.designsponge.com/category/travel)

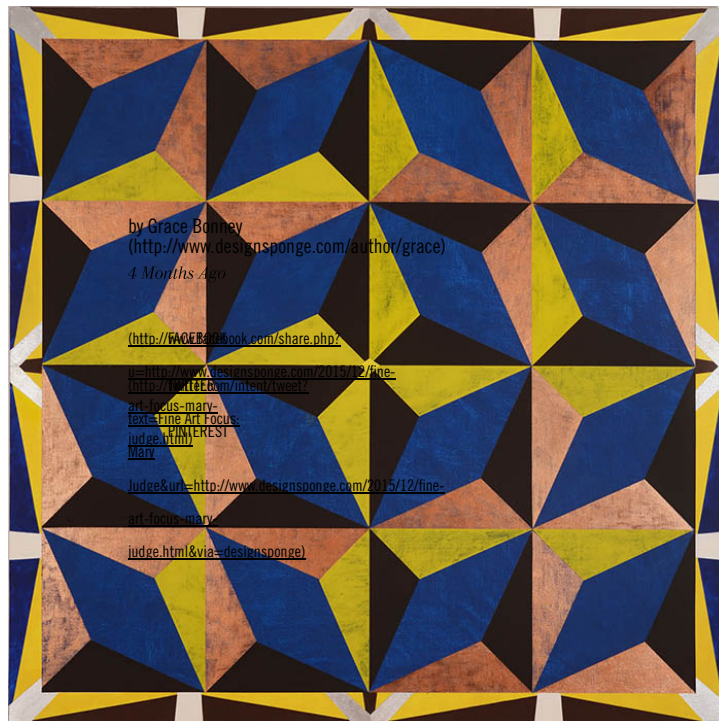
[LIFE & BUSINESS \(http://www.designsponge.com/category/life-business\)](http://www.designsponge.com/category/life-business)

[101 GUIDES \(http://www.designsponge.com/category/101\)](http://www.designsponge.com/category/101) *COLUMNS*



FINE ART FOCUS: MARY JUDGE

[ARTWORK \(HTTP://WWW.DESIGNSPONGE.COM/CATEGORY/ARTWORK\)](http://www.designsponge.com/category/artwork)



As much as I love living in a town where it feels like there are more deer than people, every now and then I miss having thousands of working artists right in my backyard. While researching for this fine art column, I keep running into amazing artists who have their studios only a few avenues over from our old apartment in Brooklyn. I've got a running list of people and studios I want to visit the next time I'm in town, and at the top of that list is artist Mary Judge.

Mary runs a gallery in Bushwick, Brooklyn called [Schema Projects \(http://schemaprojects.com/\)](http://schemaprojects.com/) and she also creates stunning artwork and sculpture, primarily using paper and concrete. Her recent work is reminiscent of traditional Italian pattern and tile work and I quite simply

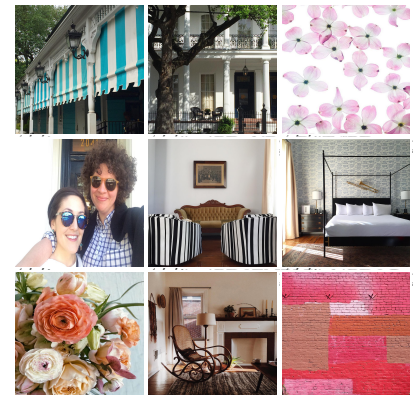


GET THE D*S NEWSLETTER

Enter Your Email Address

SUBSCRIBE

INSTAGRAM



FOLLOW US ON INSTAGRAM
[//INSTAGRAM.COM/DESIGNSPONGE](http://www.instagram.com/designsponge)

can't get enough of it. These are the sorts of pieces that make me wish I had a winning lottery ticket in my pocket so I could fill a room with these incredible patterns and colors. Until then, I'll be watching from online and enjoying Mary's work from afar. Read on below for more information on her artwork. *xo, grace*



Artist: Mary Judge

About: Mary Judge lives and works in Brooklyn, New York and St. Louis, Missouri. She studied at the Skowhegan School of Painting & Sculpture in 1974, Moore College of Art in 1975 and received her MFA from the Tyler School of Art in 1978. Mary is the owner/director of [Schema Projects](http://schemaprojects.com/) (<http://schemaprojects.com/>) in Brooklyn and has shown her work in galleries across the United States and in Europe.

Work: Mary is perhaps best known for her work with paper and concrete. Using handmade paper, she creates relief artwork inspired by flowers, stained glass and other natural forms. Mary is also inspired by (and has a vacation home in) Italy, and traditional Italian techniques and pattern work often appear in her art.

More: You can read about Mary and her work [here](http://www.maryjudge.com/about.html) (<http://www.maryjudge.com/about.html>), [here](https://www.facebook.com/mjudgeny?fref=ts) (<https://www.facebook.com/mjudgeny?fref=ts>), [here](http://newarttv.com/Mary+Judge) (<http://newarttv.com/Mary+Judge>) and [here](http://bushwickdaily.com/2011/02/flowers-of-mary-judge/) (<http://bushwickdaily.com/2011/02/flowers-of-mary-judge/>).

All artwork (C) Mary Judge. Images via [Mary Judge.com](http://maryjudge.com/) (<http://maryjudge.com/>). Portrait by [Peter Dressel](http://www.peterdressel.com/) (<http://www.peterdressel.com/>).



(<http://www.designsponge.com/2015/06/new-book-best-of-the-web.html>)

THE NEW DESIGN*SPONGE BOOK
([HTTP://WWW.DESIGNSPONGE.COM](http://www.designsponge.com/new-book-best-of-the-web.html)
[NEW-BOOK-BEST-OF-THE-](http://www.designsponge.com/new-book-best-of-the-web.html)
[WEB.HTML](http://www.designsponge.com/new-book-best-of-the-web.html))



INTERIORS

THE CURATED QUARTERS OF A PROP STYLIST
([HTTP://WWW.DESIGNSPONGE.COM](http://www.designsponge.com/curated-quarters-of-a-prop-stylist.html)
[CURATED-QUARTERS-OF-A-](http://www.designsponge.com/curated-quarters-of-a-prop-stylist.html)
[PROP-STYLIST.HTML](http://www.designsponge.com/curated-quarters-of-a-prop-stylist.html))



FOOD

HOT BREAD KITCHEN'S MOROCCAN FLATBREAD
([HTTP://WWW.DESIGNSPONGE.COM](http://www.designsponge.com/the-kitchen-with-hot-bread-kitchens-moroccan-flatbread.html)
[THE-KITCHEN-WITH-HOT-](http://www.designsponge.com/the-kitchen-with-hot-bread-kitchens-moroccan-flatbread.html)
[BREAD-KITCHENS-](http://www.designsponge.com/the-kitchen-with-hot-bread-kitchens-moroccan-flatbread.html)
[MOROCCAN-](http://www.designsponge.com/the-kitchen-with-hot-bread-kitchens-moroccan-flatbread.html)
[FLATBREAD.HTML](http://www.designsponge.com/the-kitchen-with-hot-bread-kitchens-moroccan-flatbread.html))



provisions
by FOOD52

KATHRYN
MARKEL
FINE ARTS
EST. 1976

