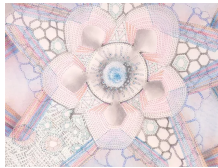




Art meets science in new Plainsboro Library exhibit

Donna Senopoulos, Plainsboro Public Library Published 12:00 p.m. ET July 28, 2017 | Updated 2:25 p.m. ET July 28, 2017



(Photo: ~Courtesy of Plainsboro Library)

PLAINSBORO – Inspired by science, township artist Sarah Morejohn creates detailed, colorful and poetic works in pencil. A collection of her work will be on display from July 29 to Aug. 23 at the The Gallery at Plainsboro Library, with an art reception planned for Sunday, Aug. 6, from 2 to 4 p.m.

Two drawings in particular, Younger Birch Bolete and Witch's Hat, based on the shapes of snow crystals and fungi, are soft and lyrical in quality. The artist explains how these and other works relate to science:



Local resident Sarah Morejohn will be displaying abstract works in pencil that are inspired by science. (Photo: ~Courtesy of Plainsboro Library)

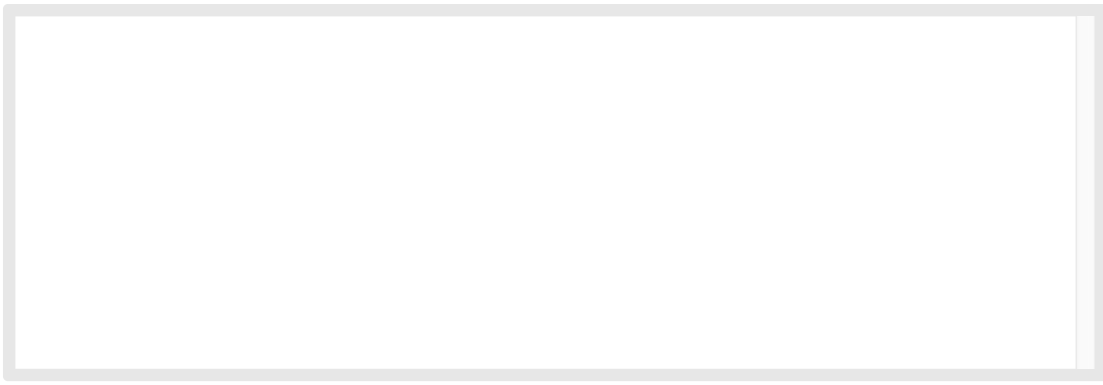
READ: [Nelly Kouzmina shows artwork of handmade felt at Plainsboro Library. \(/story/entertainment/2017/05/26/nelly-kouzmina-plainsboro-library/101171018/\)](#)

READ: [Japanese paintings at Plainsboro Library. \(/story/entertainment/2017/05/03/plainsboro-library-talko-lyding/100118506/\)](#)

READ: [Spring flowers at Plainsboro Library gallery. \(/story/news/local/middlesex-county/2017/03/30/spring-flowers-plainsboro-library-gallery/99168398/\)](#)

"My work is a language of delicacy and wonder. By making drawings with dots of ink, I am beholden to time and patience. Repetition and place-making are important to my work in the way that taking a walk may yield different discoveries about a place while going along the same route. A body of work starts from a reference point that slowly, over the course of many drawings, transforms into a different sense of place," she said.

ADVERTISEMENT



"Evolving on a personal and intuitive level my work has led me to find a common ground between the poetic and scientific, how nature can be explored and related to in its micro and macro worlds. I explore ideas of the environment, otherness, and the physics found in patterns in nature."

A recent series of drawings integrates the inorganic shapes of snow crystals and the organic shapes of fungi.

"Snow crystals begin by dew collecting on particles such as bits of sand, pollen, spores, and bacteria," she said. "I have been playing with this fact for the past year. I imagine the particles in my drawings are fungi spores that start slowly growing: billowing and folding while embedded inside the snow crystal."


Morejohn earned a bachelor's degree in painting and drawing from the University of Oregon in 2011. For the past six years, she has been devoted to her artistic practice and has exhibited in art centers and galleries as well as volunteering for arts organizations and museums.

Morejohn has exhibited in Kenise Barnes Fine Art (New York), Schema Projects (New York), Victory Hall Drawing Rooms (New Jersey), Collar Works (New York), Whipple Fine Art Gallery (Oregon), The Art Center of Corvallis (Oregon), Verum Ultimum Gallery (Oregon) and Umpqua Valley Arts Association (Oregon).

Her work can be found in permanent collections of Montefiore Medical Center, Bronx, New York, and Ursell Laboratory, Physics Department, University of Oregon, Eugene, Oregon. After living in Oregon for most of her life, the artist now lives and works in Plainsboro.

The Plainsboro Library is at 9 Van Doren St., Plainsboro. Hours are 10 a.m. to 8:30 p.m. Monday to Thursday, and 10 a.m. to 5 p.m. Friday to Sunday. For more information, call 609-275-2897.

Don't miss a thing

 [Subscribe now](http://offers.mycentraljersey.com/subscriptionselect?cancel-url=http%3A%2F%2Fwww.mycentraljersey.com%2Fget-access%2F&gps-source=CPHPPRIMARY&success-url=http%3A%2F%2Fwww.mycentraljersey.com%2Fget-access%2F&onSuccessRedirectURL=https%3A%2F%2Fwww.mycentraljersey.com%2Fget-access%2F%3Freturn%3Dhttp%253A%252F%252Fwww.mycentraljersey.com%252Fstory%252Fnews%252Flocal%252Fhow-we-live%252F2017%252F11%252F30%252Fchristmas-decorations%252F901906001%252F&return-url=http%3A%2F%2Fwww.mycentraljersey.com%2Fget-access%2F)
(<http://offers.mycentraljersey.com/subscriptionselect?cancel-url=http%3A%2F%2Fwww.mycentraljersey.com%2Fget-access%2F&gps-source=CPHPPRIMARY&success-url=http%3A%2F%2Fwww.mycentraljersey.com%2Fget-access%2F&onSuccessRedirectURL=https%3A%2F%2Fwww.mycentraljersey.com%2Fget-access%2F%3Freturn%3Dhttp%253A%252F%252Fwww.mycentraljersey.com%252Fstory%252Fnews%252Flocal%252Fhow-we-live%252F2017%252F11%252F30%252Fchristmas-decorations%252F901906001%252F&return-url=http%3A%2F%2Fwww.mycentraljersey.com%2Fget-access%2F>), to get everything you need to know about local news, education, politics, things to do, restaurants and more. Download our apps by searching for MyCentralJersey in your app store or use these links from your device: [iPhone app \(https://itunes.apple.com/us/app/my-central-jersey/id520557512?mt=8\)](https://itunes.apple.com/us/app/my-central-jersey/id520557512?mt=8) | [Android app for phone and tablet \(https://play.google.com/store/apps/details?id=com.gannett.local.library.news.mycentraljersey\)](https://play.google.com/store/apps/details?id=com.gannett.local.library.news.mycentraljersey) | [iPad app \(https://itunes.apple.com/us/app/my-central-jersey/id520557512?mt=8\)](https://itunes.apple.com/us/app/my-central-jersey/id520557512?mt=8) Don't forget to ["like" us on Facebook! \(https://www.facebook.com/MyCentralJersey\)](https://www.facebook.com/MyCentralJersey).

Read or Share this story: <http://mycj.co/2veN0i1>