

In the Loop

Featured

Events

News

EXHIBITION

Yolanda Sánchez | Along the Road of Dreams

[College of the Arts](#)
[School of Art + Art History](#)
[Exhibition](#)
[University Galleries](#)


DATE & TIME

Tuesday, August 30, 2016 12:00am — through
Thursday, October 06, 2016 12:00am

[Add to Calendar](#)

COST

Free

DESCRIPTION

University Galleries at the University of Florida (UF) is pleased to present *Yolanda Sánchez | Along the Road of Dreams* in University Gallery, located on UF's campus, **August 30 through October 6, 2016**. Due to Tropical Storm Hermoine, the opening reception on **September 1 from 5-7 pm** as well as the brown bag lunch on **September 2 from 11:30 am-1 pm** in University Gallery will be cancelled and rescheduled for a later date.

Yolanda Sánchez was born in Cuba and raised in Miami, considering herself a product of that "supersyncretic" (Benitez-Rojo) culture, which is the Caribbean. Educated in the United States,

RECENT NEWS

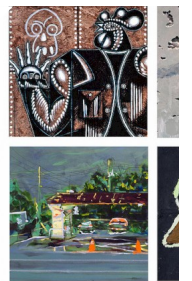
PRESS RELEASE : AU

The Hippodrome T
 University of Florid
 Theatre and Dance
 four...



ALUMNI NEWS : AUG

SA+AH alumnus o
 exhibition at Mian
 College



Sánchez earned her PhD in Psychology, and practiced for years before returning to school and earning her MFA at Yale University. Sánchez has served as Director of the Fine Arts & Cultural Affairs Division at Miami International Airport for over 20 years.

Of her work Sánchez says:

Making art for me is a way of being present in the world; it is an act of attention. And through this attention, I give back and offer praise to the world. As such, my work is celebratory, expanding, opening, and about offering pleasure. From a formal perspective, my study and training in calligraphy and my background in dance inform my marks. Calligraphy, like dance, is an interaction of movement and pause, energy and stillness. Full of motion, like individual dances of line and form, the marks are a universal aesthetic, conveying a life force, independent of meaning or readability. Rhythm, harmony of opposing forces, sense of space, purity and mystery, the gestural brushstroke – these qualities make up my process.

To learn more about Sánchez and her work, visit her website at yolandasanchezstudio.com.

Gallery Location

University Gallery, located in Fine Arts B at the intersection of SW 13th Street and SW 4th Avenue, provides high-quality, thought-provoking exhibitions changing every two to 12 weeks that engage the university and wider community in stimulating dialogue facilitated by contemporary visual language and culture. For the past 12 years the University Gallery has collaborated with myriad UF colleges, community and regional entities in creating a trans-disciplinary venue for the visual arts. Exhibitions feature internationally-recognized artists, an annual faculty exhibition, a juried student art show and two MFA graduating thesis project shows. The 3,000-square-foot space is a lively, exciting venue that is utilized for many events throughout the academic year. University Gallery is open Tuesdays, Wednesdays and Fridays: 10 a.m.–5 p.m.; Thursdays: 10 a.m.–7 p.m.; and Saturdays: 12 p.m.–4 p.m. The gallery is closed Sundays, Mondays and holidays.

Parking

Daytime parking is available in reserved spaces between Fine Arts Building C (FAC) and Inner Road. From SW 13th Street, enter campus on Museum Drive. Turn right on Newell Drive, then right on Inner Road. Turn left into the parking lot behind FAC. The first three spaces on the left are reserved for gallery use. Parking permits are issued to gallery visitors in the University Gallery.

For More Information

Call University Gallery at (352) 273-3000.

VENUE

University Gallery

ADDRESS

400 SW 13th Street
Fine Arts Building B (FAB)
Gainesville
FL 32611

PHONE

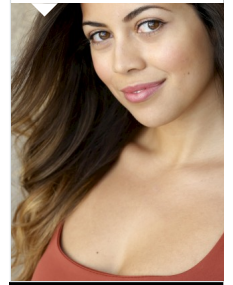
[\(352\) 273-3000](tel:(352)273-3000)

WEBSITE

[University Gallery Website](#)

ALUMNI NEWS : AUG

From TV to movies
Rivera continues to
success





CONTACT US

- [Faculty & Staff Directory](#)
- [Addresses & Locations](#)
- [Campus Map & Parking](#)

RESOURCES

- [Job Opportunities](#)
- [Accreditations](#)
- [Faculty/Staff Login](#)

SHOW YOUR SUPPORT

- [Become A Friend](#)
- [Make A Gift](#)
- [Contact Development](#)

CONNEC

